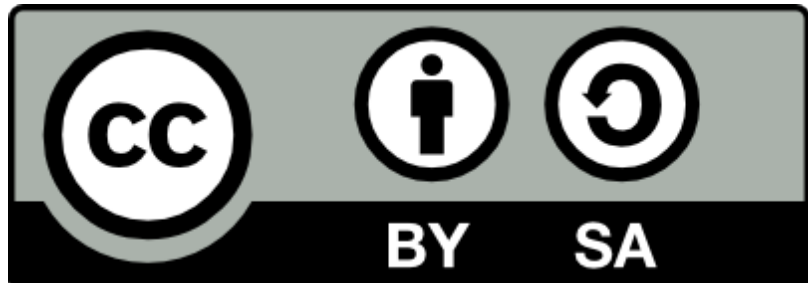


Temperatuur



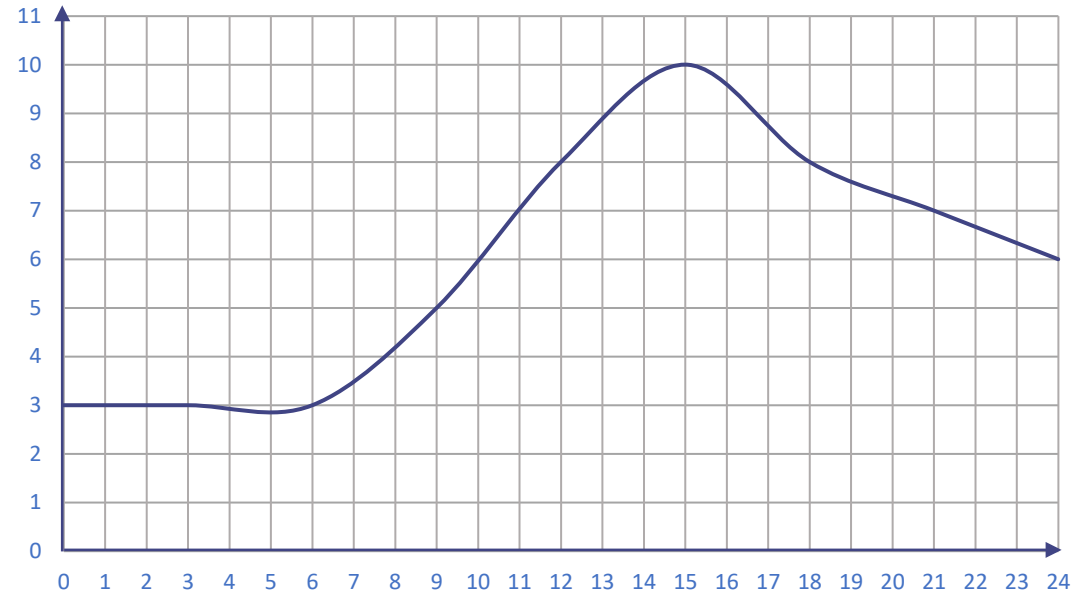
Dit materiaal wordt geleverd door het FunThink-team, verantwoordelijke instelling:

Onderwijsuniversiteit Ludwigsburg

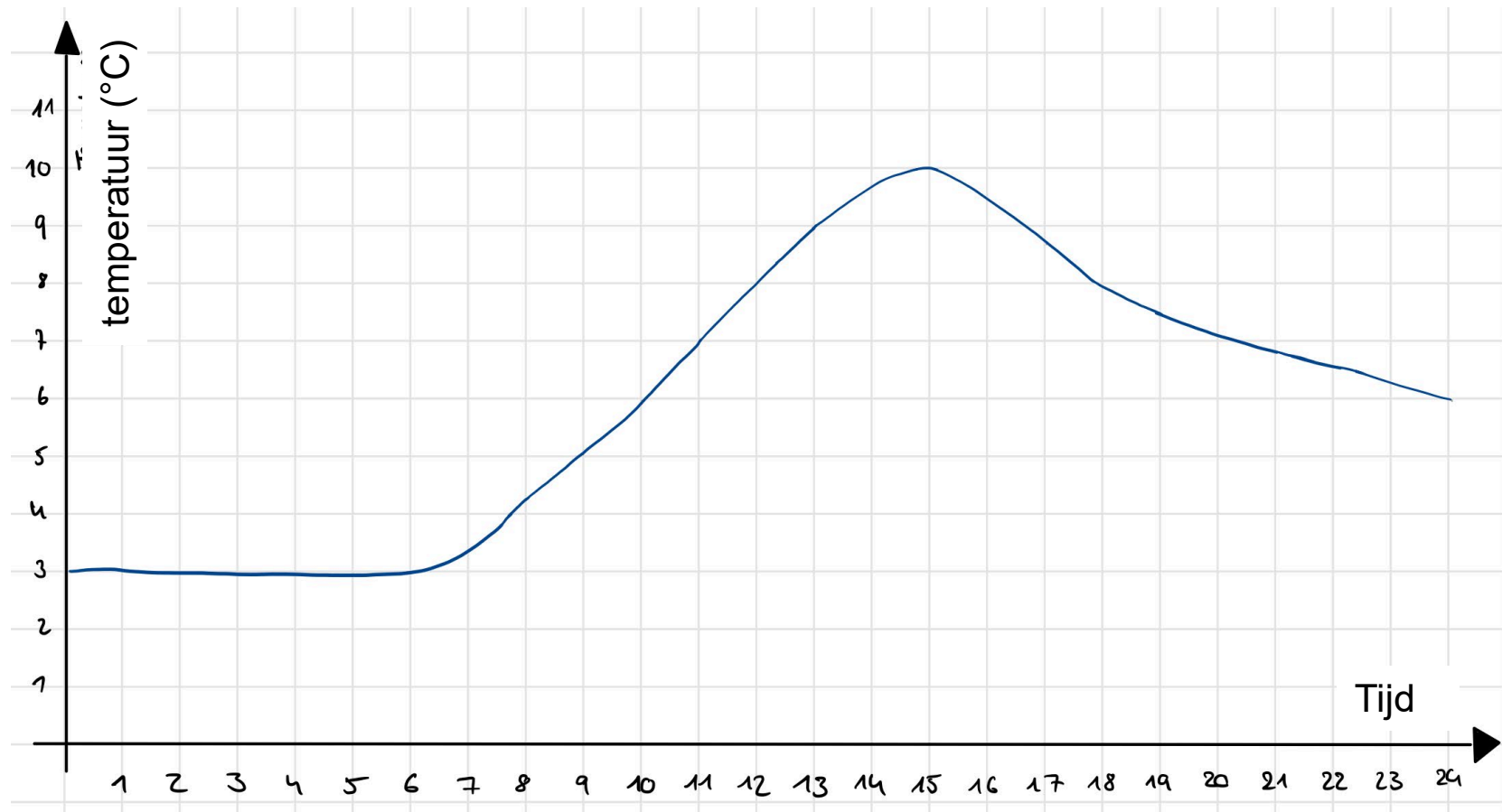
Tenzij anders vermeld, zijn dit werk en de inhoud ervan gelicentieerd onder een Creative Commons-licentie (CC BY-SA 4.0). Uitgesloten zijn financieringslogo's en CC-iconen / modulepictogrammen.

Temperatuur

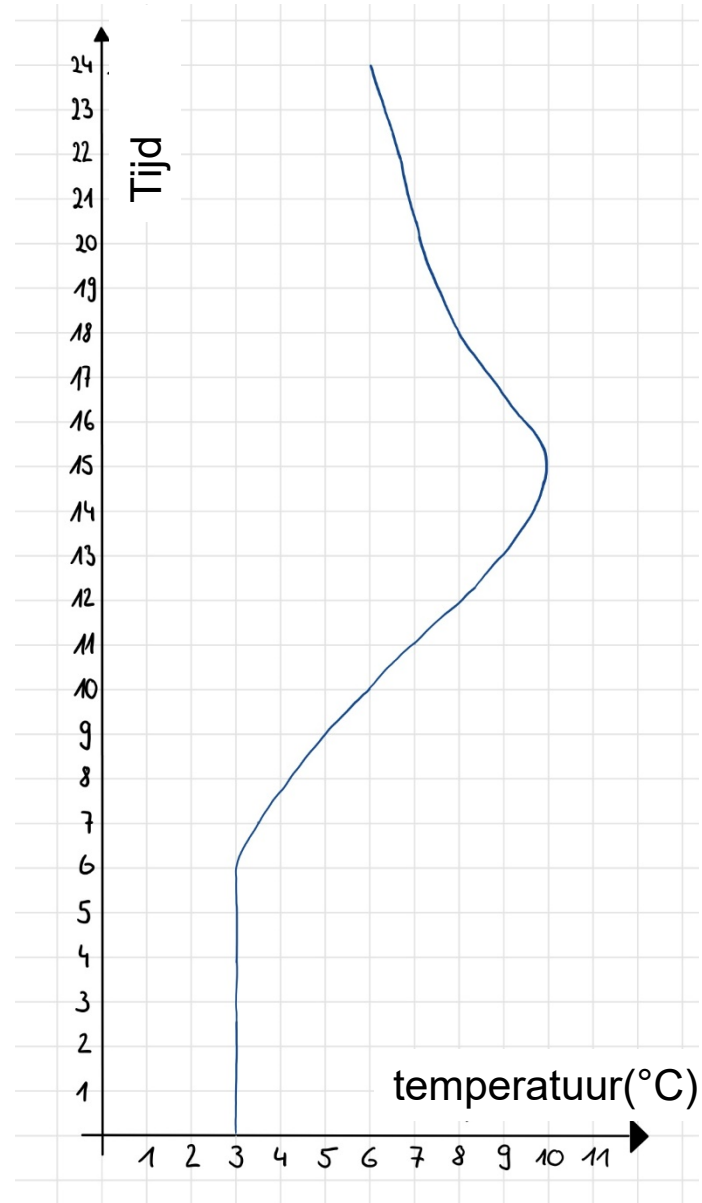
Temperatuur Stuttgart

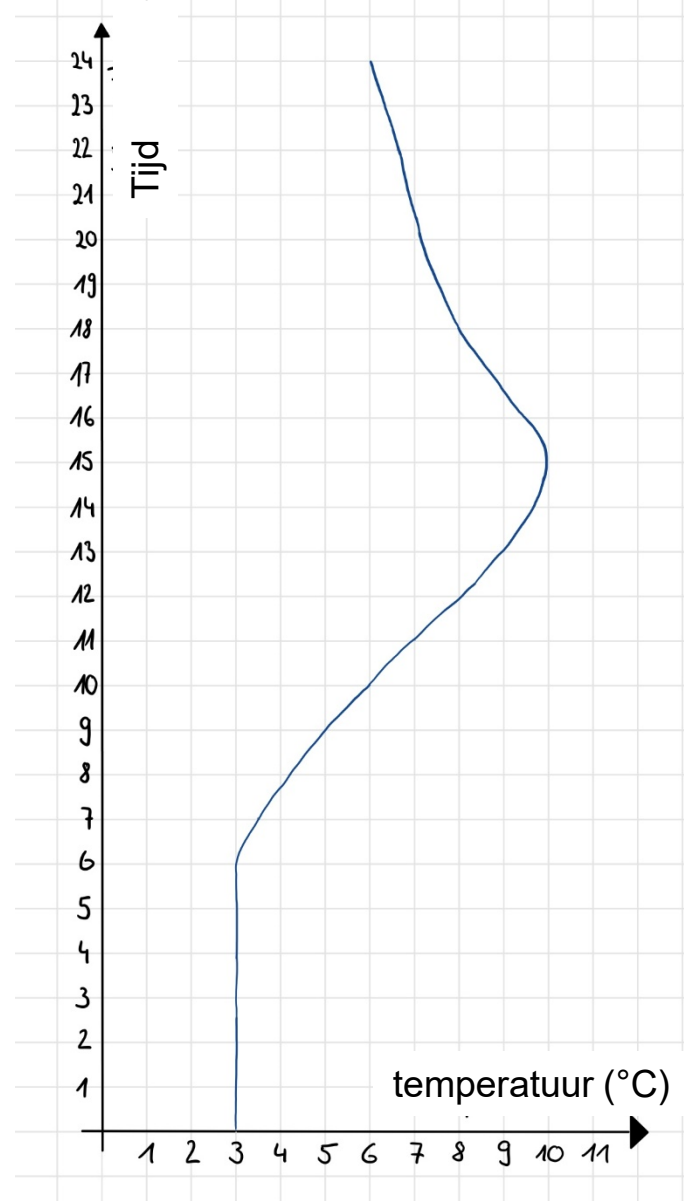
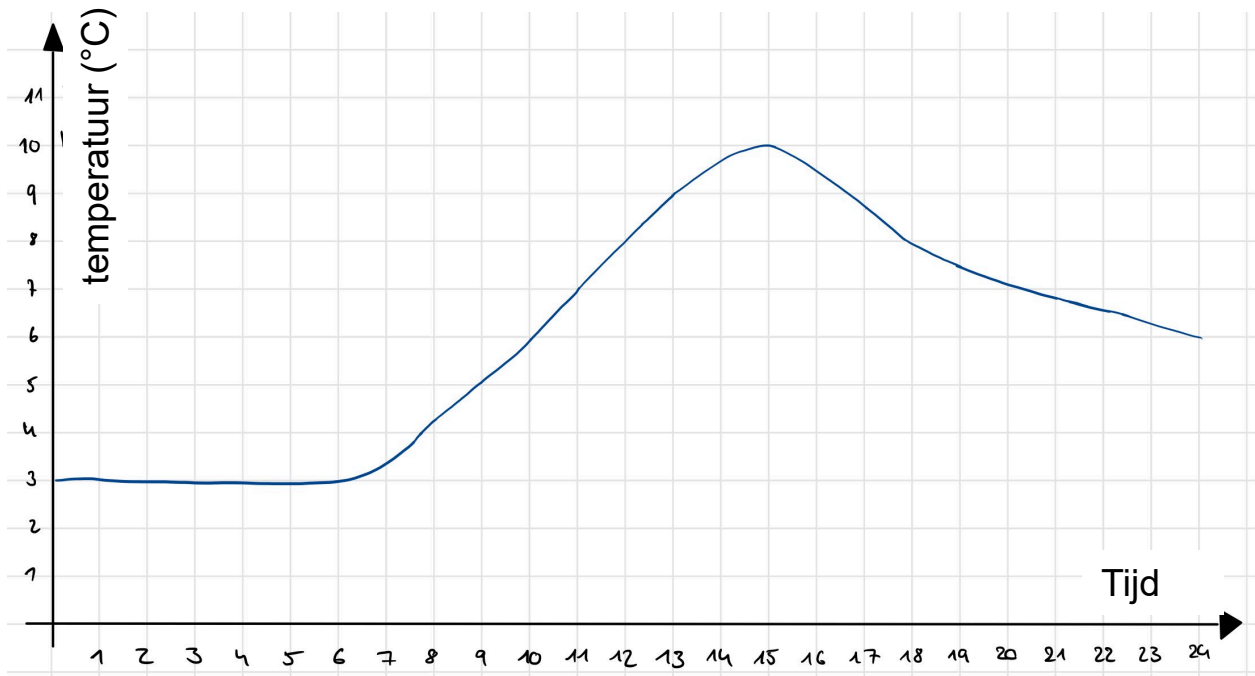


Temperature Stuttgart



Source temperature data: <https://www.wetter2.com/europe/germany/baden-wuerttemberg/stuttgart?page=past-weather#day=2&month=2> (25.03.2022)

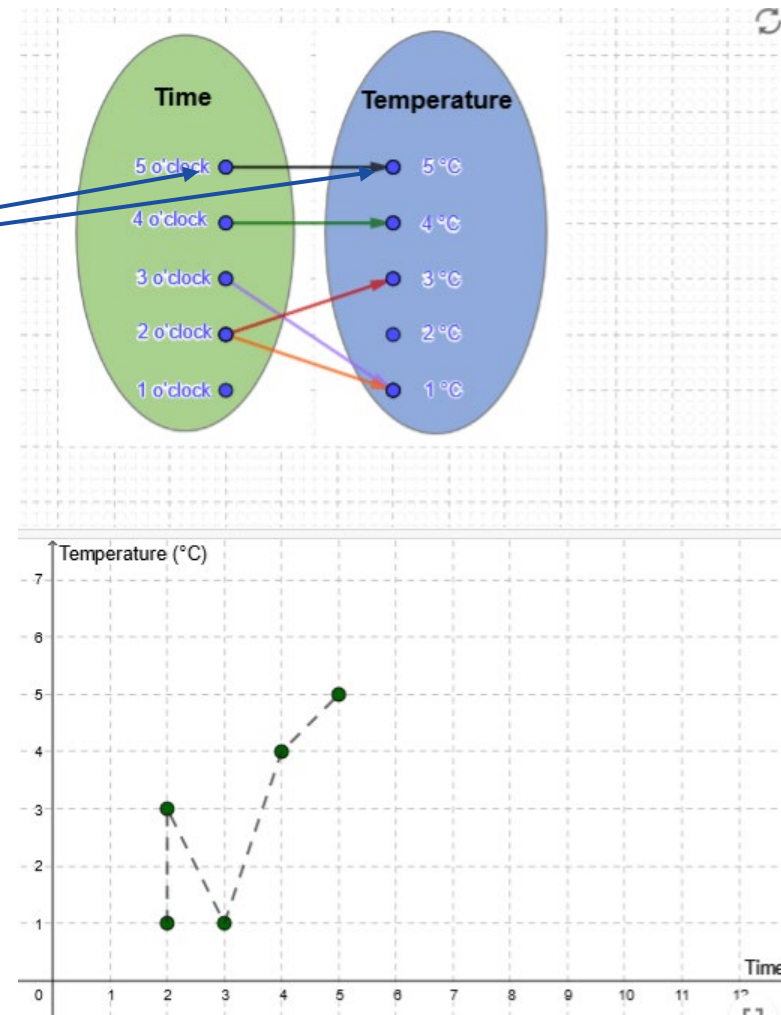




GeoGebra „Temperatuur“

Voltooi de onderzoeksoopdracht in GeoGebra.

Pijlen
verplaatsen



Taak:

QR-code scannen. Dit leidt u naar de GeoGebra-applet "Temperatuur".
Voltooi de onderzoeksoopdrachten in volgorde en noteer je bevindingen in
je onderzoeksboekje.



<https://www.geogebra.org/m/uka5kz4c>

Functie als unieke afbeelding

Funktion as unique mapping

A function is a _____ **mapping**. It assigns each value of the first quantity x (e.g., 3 o'clock) exactly one value of the second quantity y (e.g., 14 °C). Both values (e.g. 3 o'clock and 14 °C) form together an **ordered pair**. The assigned values of the second quantity (e.g., 14 °C) are called **function values**.

Functions can be represented in different ways, e.g.

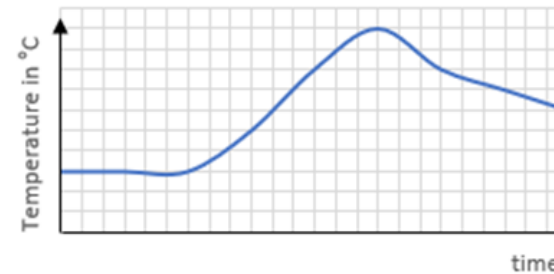
in a **table**

Time	0	1	2	3	4	5	6	7
Temperature in °C	4	4	3	3	3	2	2	4

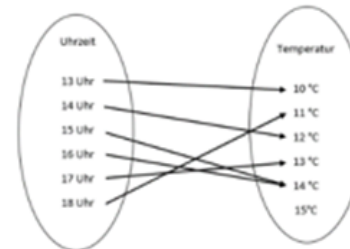
in a **description using words**

“At 15 o'clock it was at its warmest with 14 °C. From 9 o'clock until 12 o'clock, there was the greatest temperature rise of 6 °C. “

in a **graph**



in an **arrow diagram**



Functie als unieke afbeelding

Funktion as unique mapping

A function is a unique **mapping**. It assigns each value of the first quantity x (e.g., 3 o'clock) exactly one value of the second quantity y (e.g., 14 °C). Both values (e.g. 3 o'clock and 14 °C) form together an **ordered pair**. The assigned values of the second quantity (e.g. 14 °C) are called **function values**.

Functions can be represented in different ways, e.g.

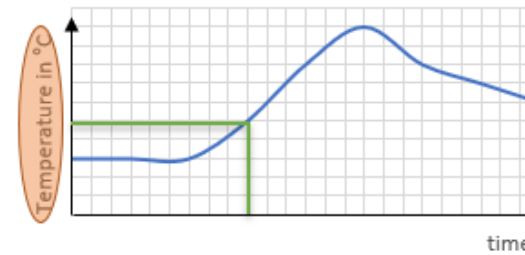
in a **table**

Time	0	1	2	3	4	5	6	7
Temperature in °C	4	4	3	3	3	2	2	4

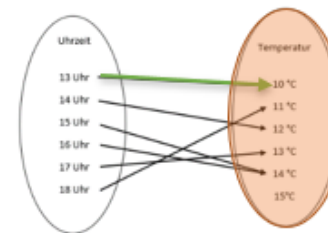
in a **description using words**

“At 15 o'clock it was at its warmest with 14 °C. From 9 o'clock until 12 o'clock, there was the greatest temperature rise of 6 °C. “

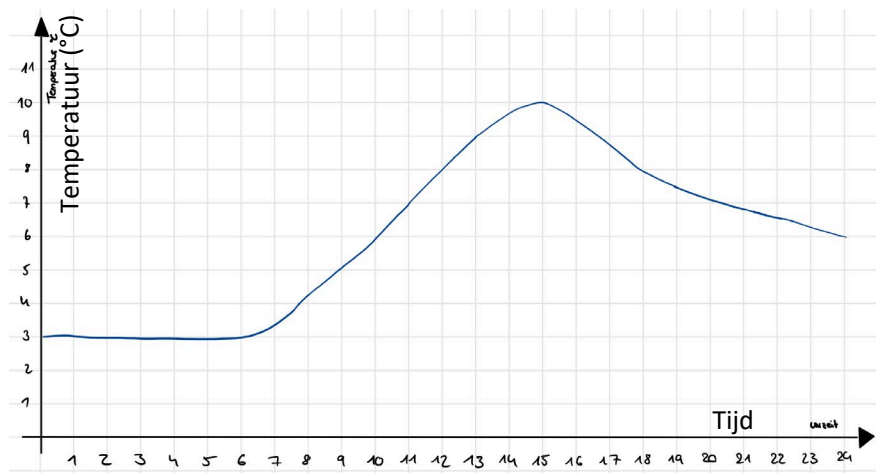
in a **graph**



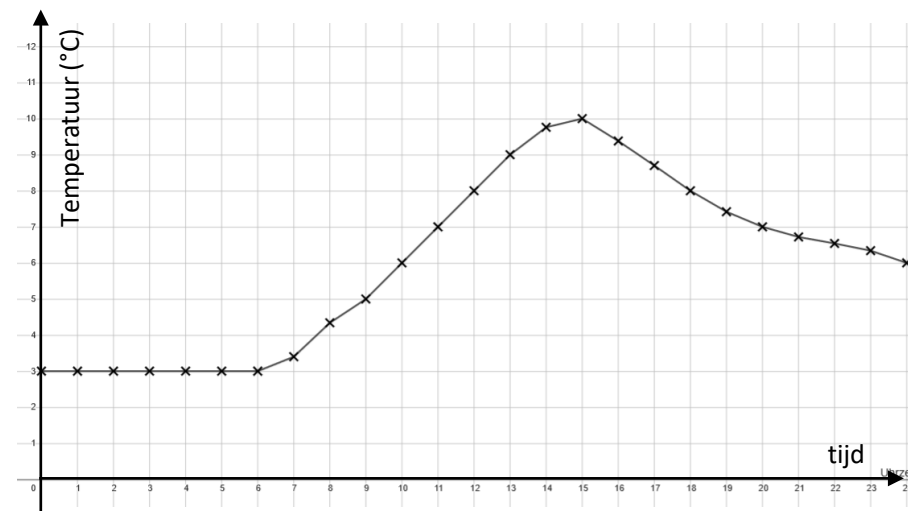
in an **arrow diagram**



Welke grafiek past beter?

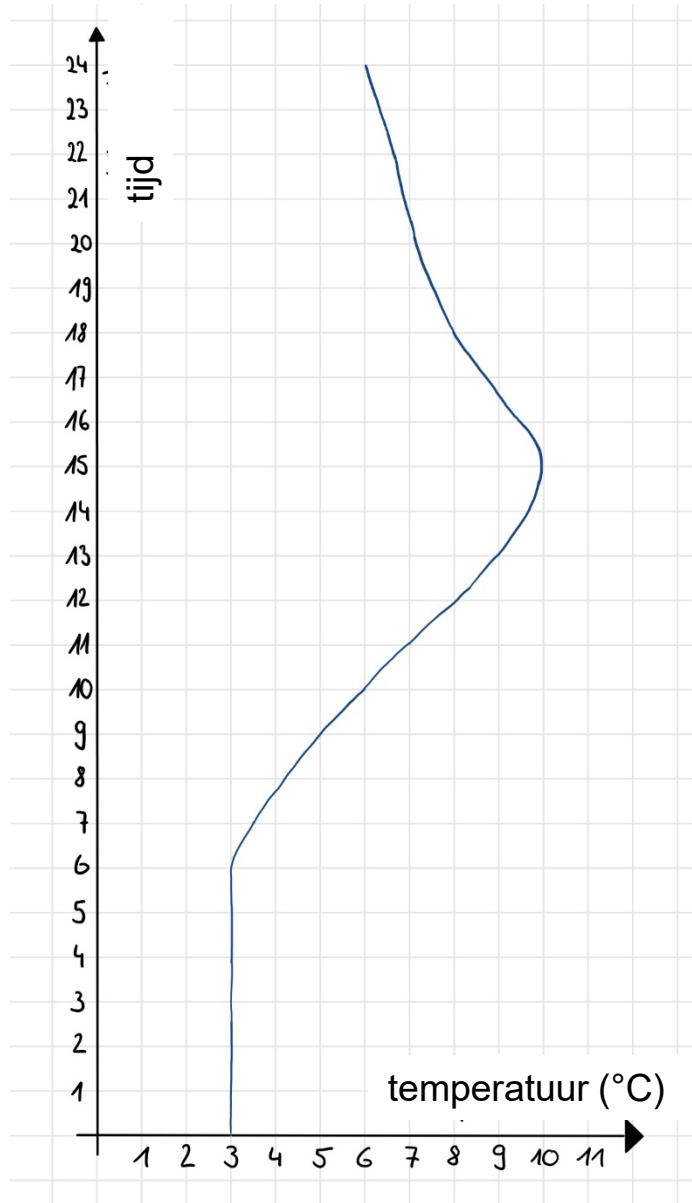
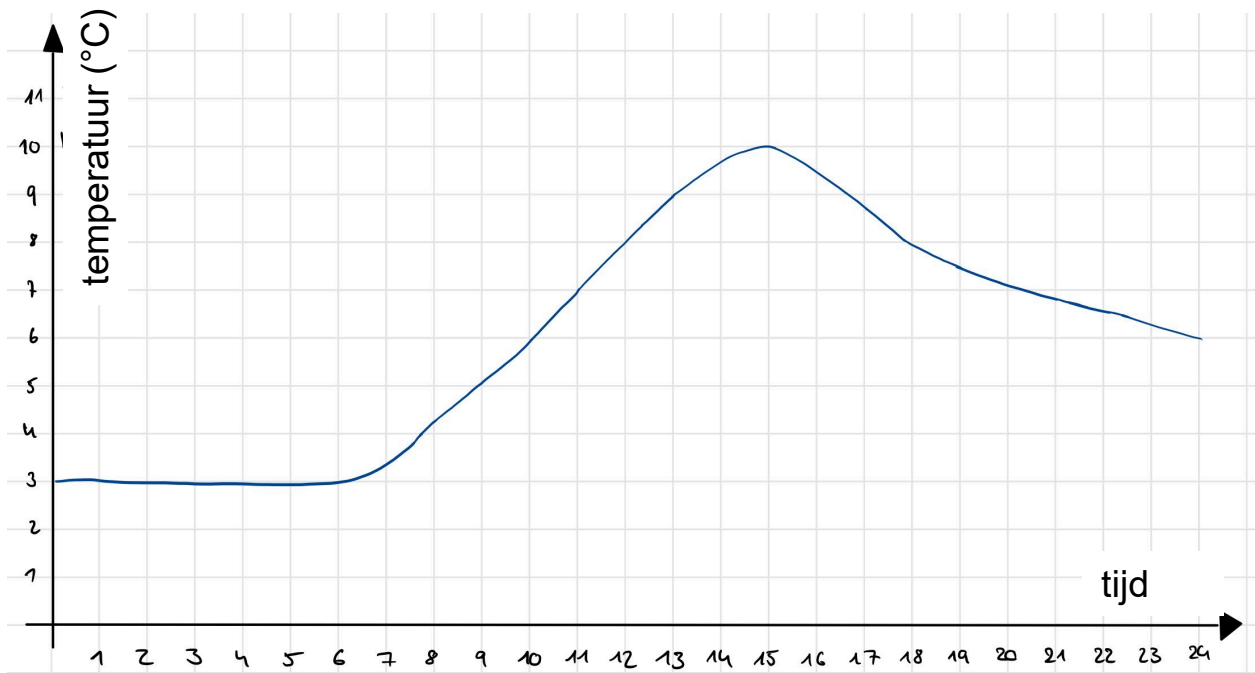


A

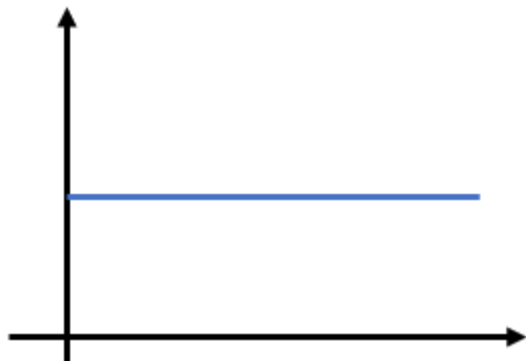


B

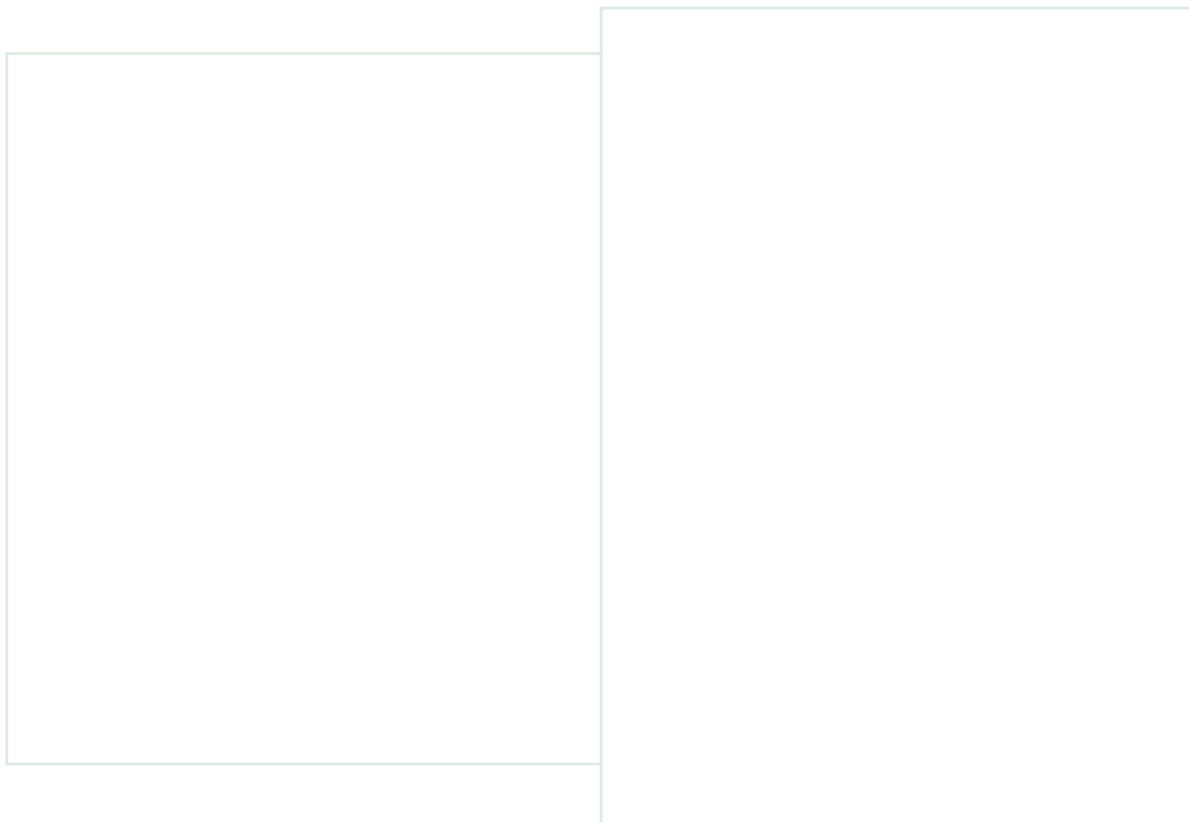
Welke grafiek representeert een functie?



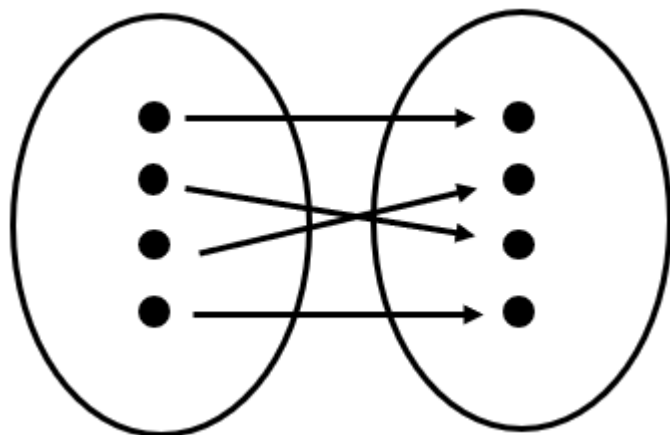
Is deze afbeelding uniek? Leg uit!



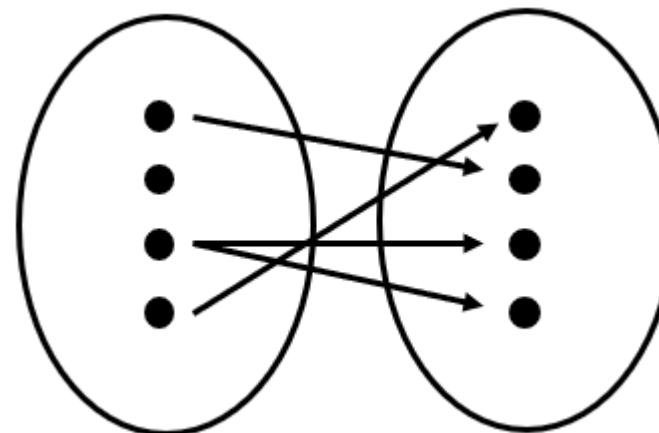
1



Is deze afbeelding uniek? Leg uit!

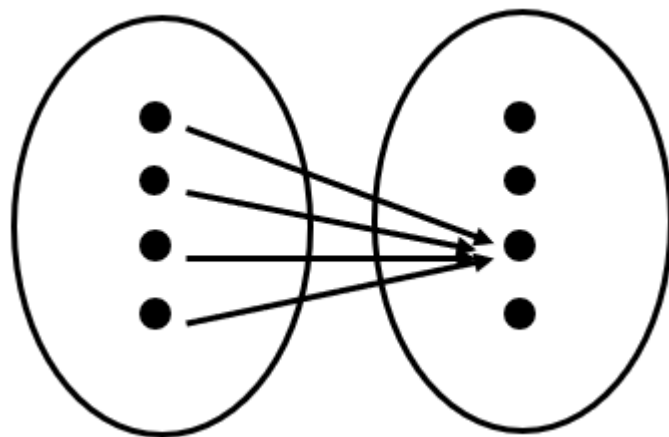


1

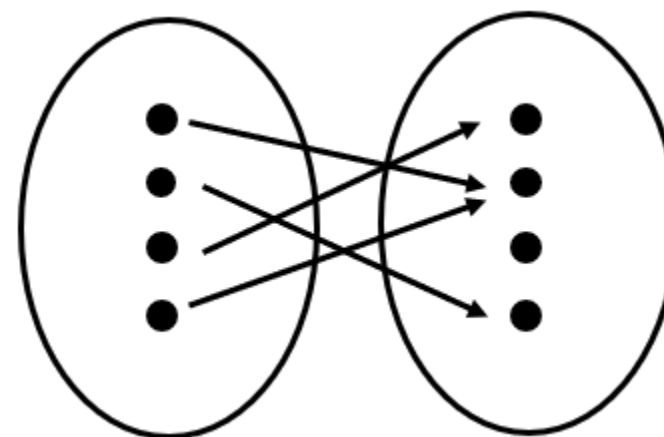


2

Is deze afbeelding uniek? Leg uit!



1



2

Is deze afbeelding uniek? Leg uit!

Situatie 1: Het aantal komkommers en hun prijs.

Situatie 2: De brandduur van een kaars en de hoogte van een kaars.



Situatie 3: De afgelegde afstand naar school en de tijd die nodig is.

Situatie 4: Een Engels woord en de vertaling ervan in een andere taal.

Co-funded by the
Erasmus+ Programme
of the European Union



The European Commission's support for the production of this publication does not constitute an endorsement of the contents, which reflect the views only of the authors, and the Commission cannot be held responsible for any use which may be made of the information contained therein.